

  
**PROMINENCE**  
ESTATES



**RESIDENTIAL**  
PROPERTY EXPERTS

COVENTRY, WARWICKSHIRE  
& LEAMINGTON SPA

GOOD  
VIBES  
ONLY

**LAWFORD ROAD,**  
RUGBY, CV21 2EB

**£775 PCM**

## LAWFORD ROAD



# PROMINENCE

ESTATES

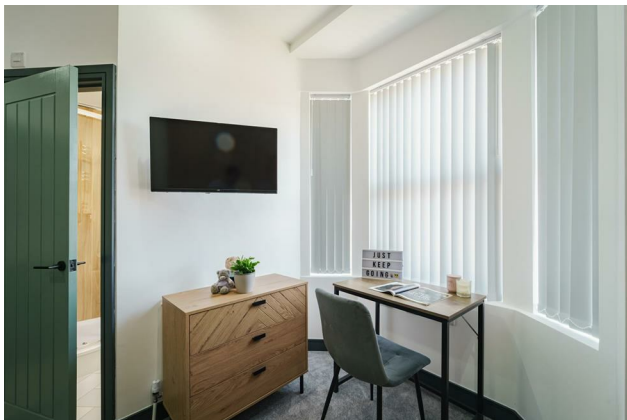
A well-presented self-contained studio is available within a friendly shared house in Rugby, offering comfortable single-occupancy living in a convenient and well-connected location.

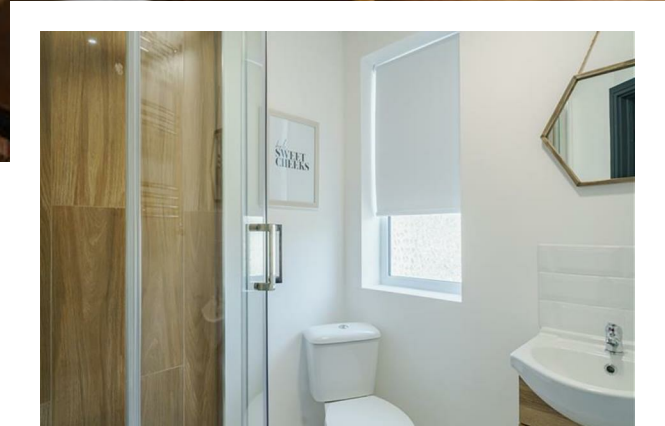
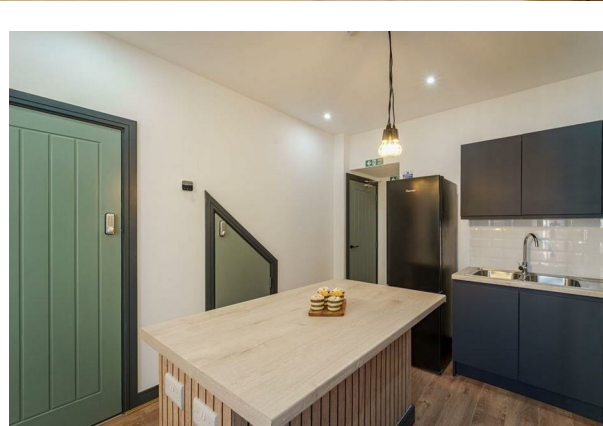
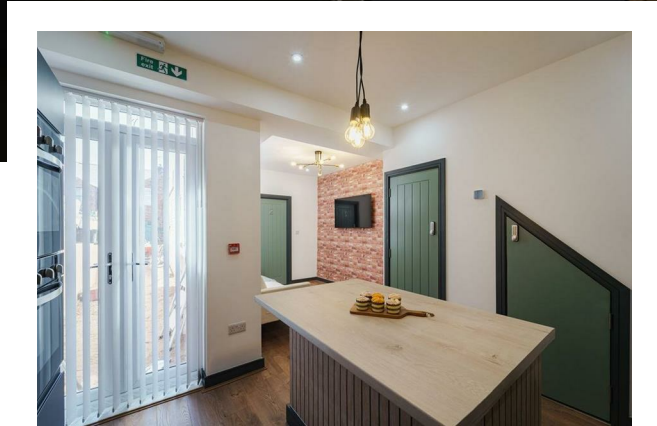
The studio is fully furnished, making it ideal for a hassle-free move-in, and is suitable for single occupancy only. All bills are included in the rent, covering utilities such as water, electricity, heating, and broadband, helping to keep monthly costs simple and predictable.

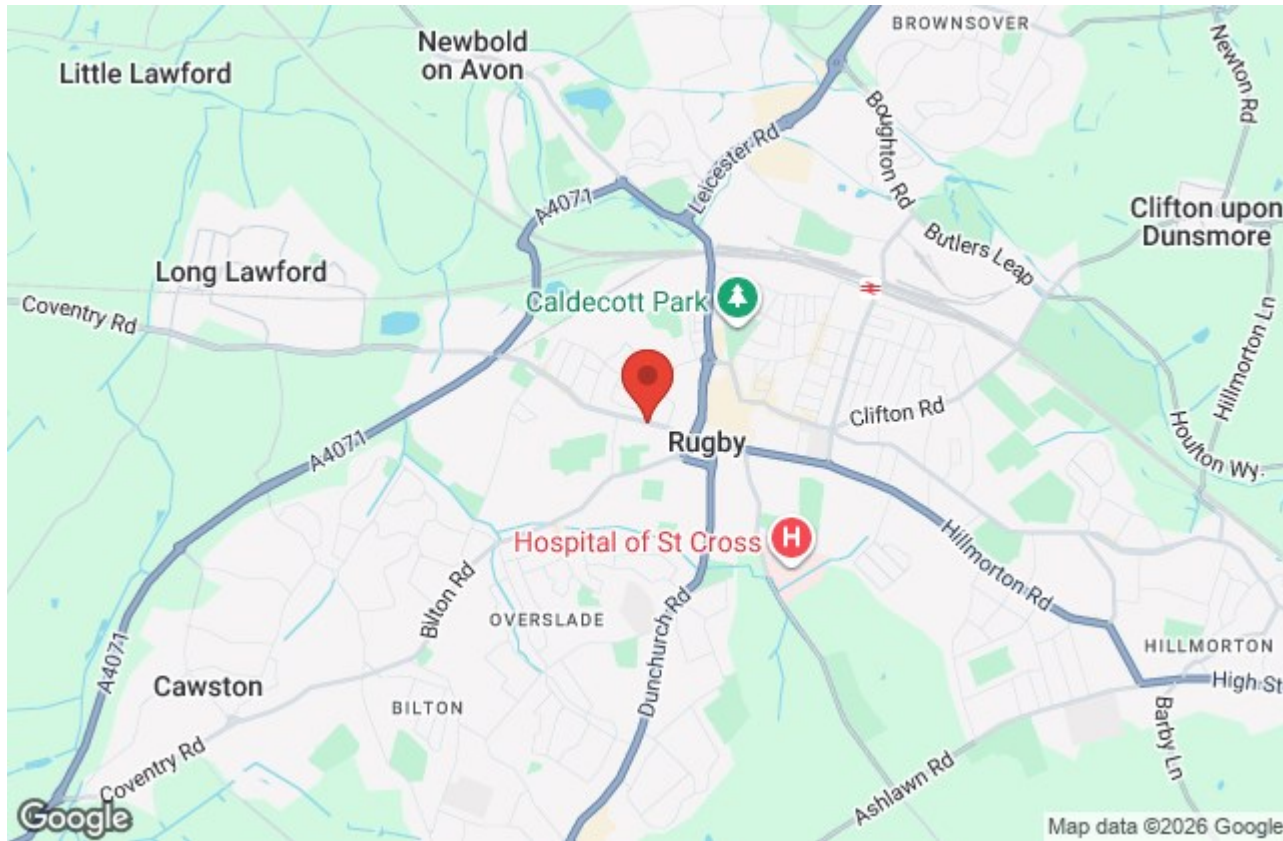
In addition to the private studio space, residents also benefit from access to a shared communal kitchen within the property, providing a practical and sociable space for cooking and day-to-day use.

The property is well located for transport links, with easy access to Rugby railway station and onward connections via West Midlands Railway, making commuting to nearby towns and cities straightforward.

Local amenities are close by and include supermarkets, convenience stores, gyms, cafés, and takeaways. The area also offers green spaces and parks for outdoor leisure. Healthcare services are well supported locally, including University Hospitals Coventry and Warwickshire – Rugby St Cross Hospital.







Prominence Estates  
5 Queen Isabels Avenue,  
Cheylesmore,  
Coventry,  
CV3 5GE

02476 309 826  
lettings@prominenceestates.com  
www.prominenceestates.com

  
**PROMINENCE**  
ESTATES